

**KBT****617~960/1710~2700/3300~3800MHz 80°/75°/50° 8/9/8dBi
MIMO Directional Panel Antenna****TDJ-X0638BGA-M****Application**

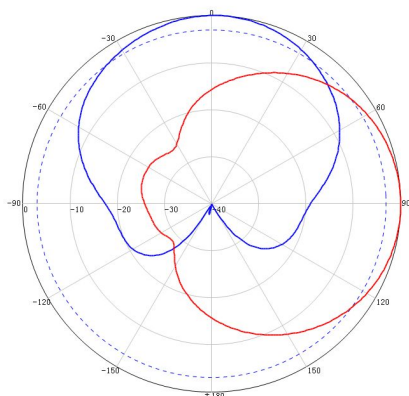
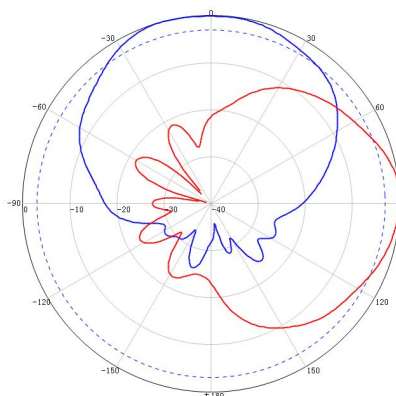
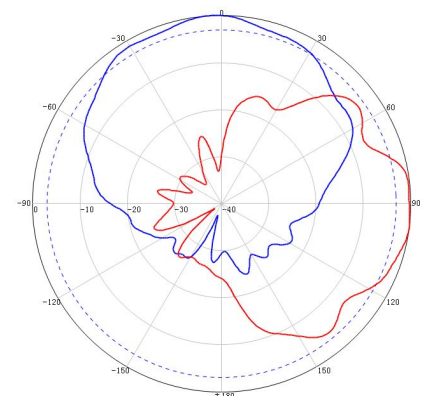
Used in 2G/3G/4G/5G/WLAN system

Electrical specifications

Frequency range (MHz)	617~960	1710~2700	3300~3800
Polarization	±45°		
Gain (dBi)	8±1	9±1	8±1
Horizontal beam width (°)	80±15	75±15	50±20
Typical Vertical beam width (°)	70	55	30
Front-to-back ratio (dB)	20	25	20
Isolation (dB)	≥20	≥20	≥20
Impedance (Ω)	50		
VSWR	≤2.0	≤1.8	
Intermodulation IM3 (2×43dBm carrier)	-150dBc		
Maximum power (W)	50		
Lighting protection	DC Ground		

Mechanical specifications

Connector	2*N Female or 2*4.3-10 Female
Exposed cable size (cm)	30(or customer requirement)
Connector position	Bottom
Antenna size (mm)	306*250*86
Packing size (mm)	370*260*100
Weight (kg)	1.1
Radome material	ABS
Radome color	White
Operating temperature (°C)	-40~60
Application	Indoor
Mounting	Wall Mounting
Waterproof	IP44

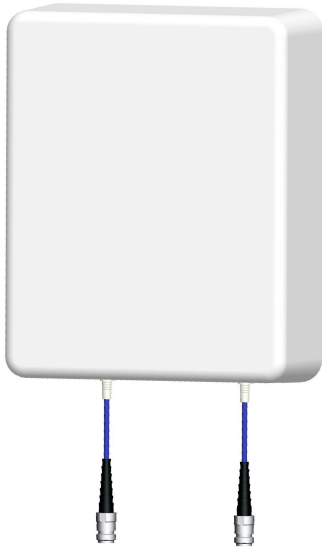
617~960MHz Typical pattern:**1710~2700MHz Typical pattern:****3300~3800MHz Typical pattern:**



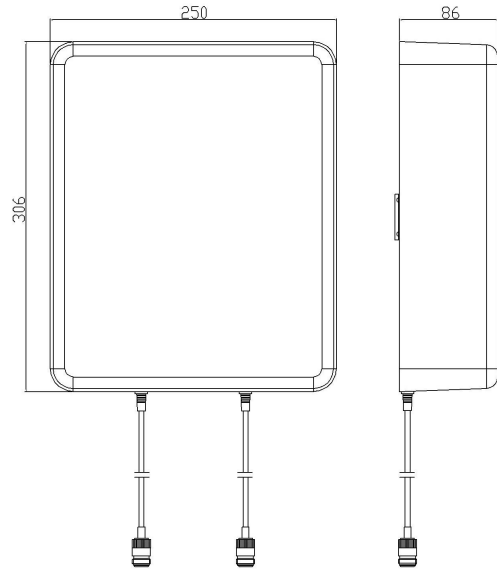
KBT

617~960/1710~2700/3300~3800MHz 80°/75°/50° 8/9/8dBi
MIMO Directional Panel Antenna

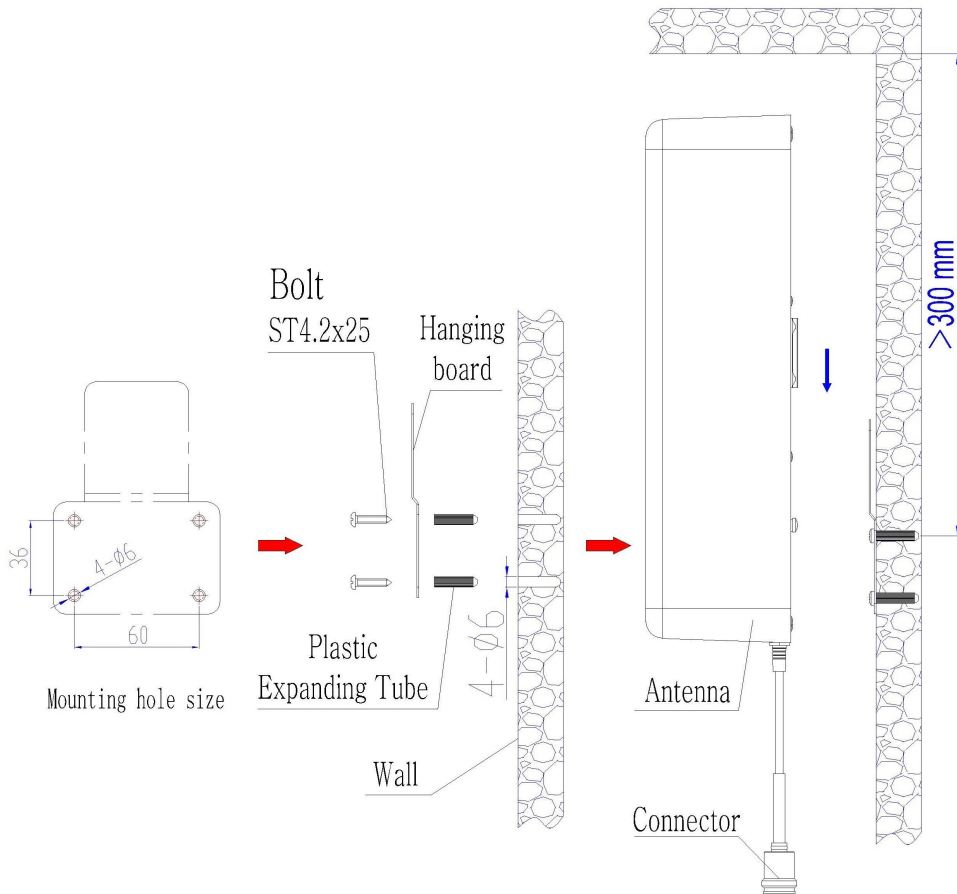
Product pictures



Product size



Installation Sketch



1. Position and fix the mounting plate onto the wall with the countersunk self-tapping screws ST4.2×25 and plastic accessories.

2. Finish the installation by matching the clamp piece on the antenna base plate to the mounting plate hanger.